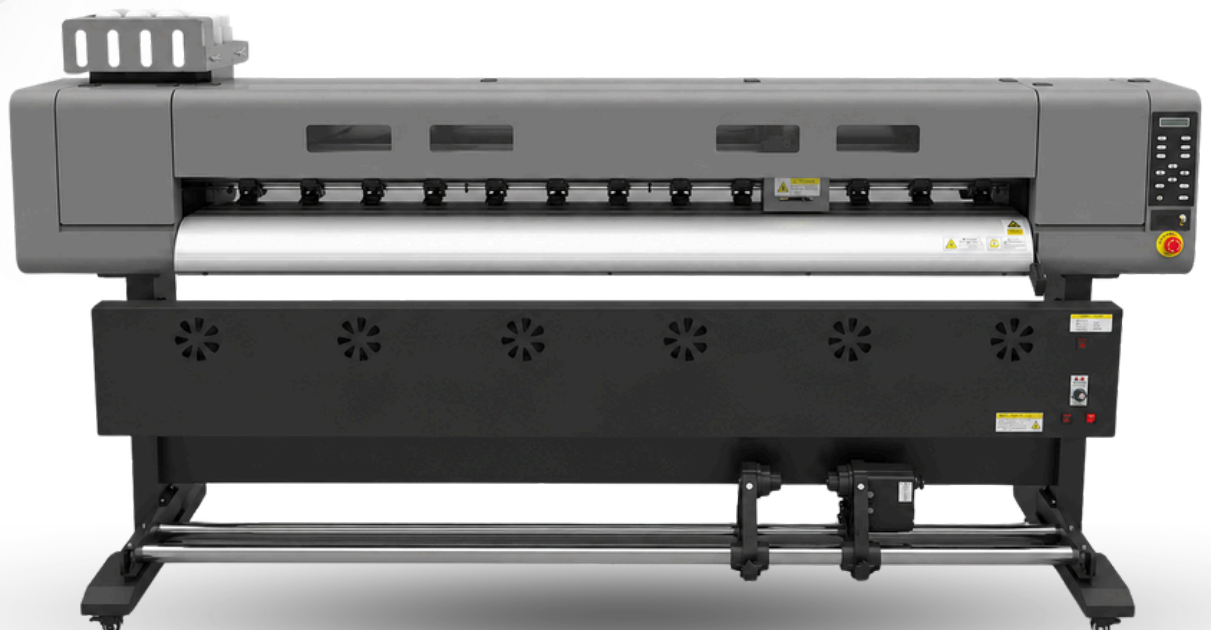


Eco Solvent Printer

Single Head | Epson i3200 | 1.9m

The Single Head Eco Solvent Printer by Mono Sign is designed for high-quality printing on a wide range of media including Vinyl, Flex, One-Way Vision, Backlit Film, and Canvas. Ideal for signage, branding, wallpapers, vehicle graphics, and advertising applications.



Product Application



Vehicle Graphics



Flex Banner



One Way Vision



Vinyl Printing



Backlit Signage



Wallpaper Printing



Canvas Printing



Photo Paper



Window Graphics



Retail Branding Displays

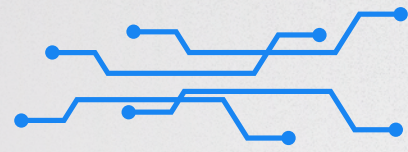


Outdoor Advertising



Exhibition & Event Graphics

Product Parameters



Model No.	ES-1900-E1-BY	
No. of Print Heads	1 x Epson i3200 E1	
Print Speed	4 Pass - 16m ² /h	6 Pass - 10.5 m ² /h
Maximum Resolution	Up to 3200 DPI	
Max. Print Width	1900mm	
Ink	Eco Solvent Ink (CMYK)	
Printing Technology	Piezoelectric Inkjet	
Compatible Media	Vinyl, Flex, One-Way Vision, Canvas, Backlit Film	
Media Thickness	Up to 10 mm	
RIP Software	MainTop / PhotoPrint	
Print Head Nozzle Cleaning	Fully automatic cleaning, Fully automatic ink wiping, Fully automatic moisturizing	
Ink Supply System	Bulk Ink Supply System	
Ink Tank Capacity	1.5 L	
Features	Ink Low Alarm, Anti-Crash Sensor, Automatic Head Protection, Auto Take-Up System	
Control Board	Hosonsoft	
Drying System	2000W IR Heaters with Air Cooling	
Power Requirements	3500W, AC 220V+ _{-5%} , 50Hz~60Hz	
Working Environment	Temperature: (22°C to 28°C) Humidity: 35 to 80% (no condensation)	
Interface	USB 3.0 / LAN	
Printer Dimensions / Weight	2800 × 750 × 1450 mm (L × W × H)	
Packing Dimensions	2900 × 690 × 630 mm (L × W × H)	
Warranty	1 Year Warranty on Control Boards & Motors (Excluding Print Heads)	
Computer Configuration	Operating System	Windows 7, 8, 10
	Hardware Requirements	SSD above 256GB, 8GB Dual-Channel RAM (2400 MHz or above), Independent Video Memory above 2GB, Intel Core i5 processor or above
	Interface	USB 3.0 high-speed interface/ Gigabit Ethernet Cable